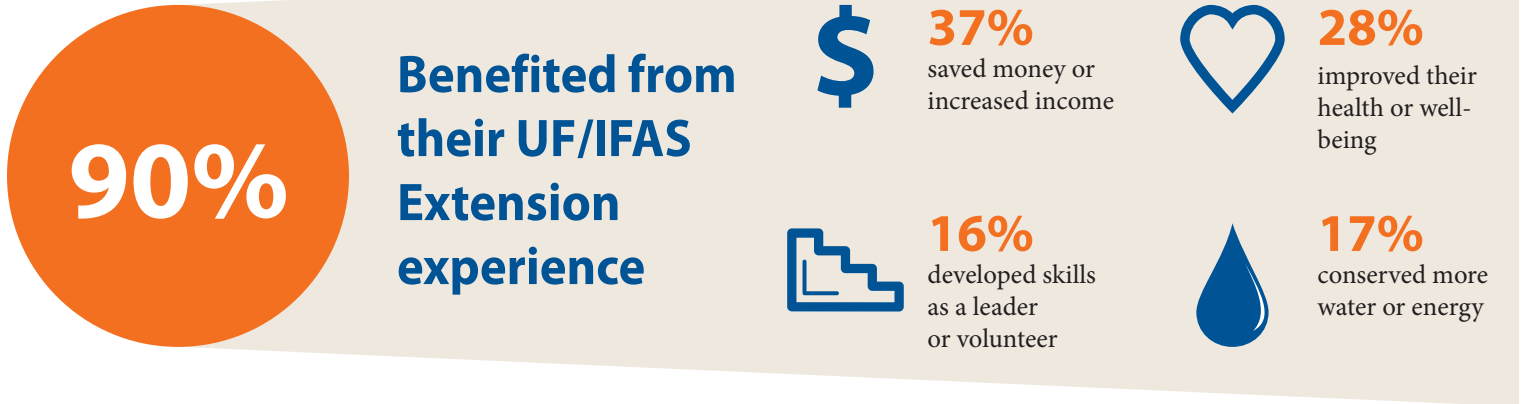




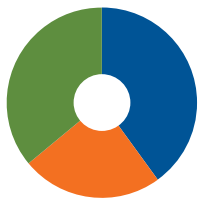
As part of our annual evaluation and accountability process, UF/IFAS Extension regularly conducts a Client Experience Survey, allowing the people in each county we serve to judge our performance and give their opinions about the quality of the information they received, its usefulness to them, and the impact it's had on their lives.

OF PARTICIPANTS SURVEYED IN 2021...



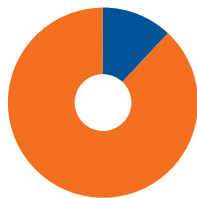
ABOUT THE RESPONDENTS (n = 142)

Years Using Extension



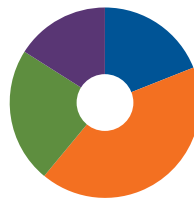
40% 1 year or less  
24% 2-4 years  
36% 5+ years

Location



12% Rural  
88% Urban

Age of Respondents



19% Under 45  
42% 45-64  
23% 65-74  
16% 75+



For more information about the UF/IFAS Extension Client Experience Survey, visit <http://pdec.ifas.ufl.edu/satisfaction>.