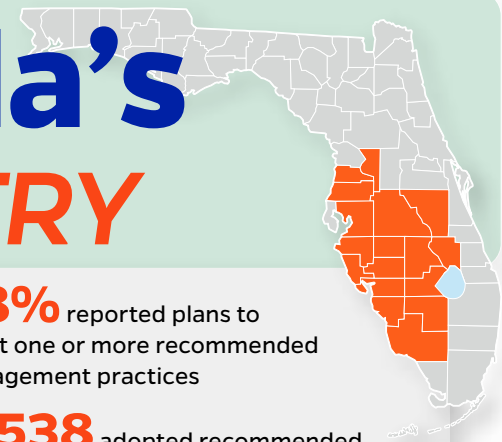




Improving Florida's BEEF CATTLE INDUSTRY



463 **215,000**

South Florida livestock producers participated in our educational programs in 2023, representing

cattle and **1.2 million** acres of range land in Central and South Florida.

61% average increase among South Florida participants in overall knowledge of reproduction, forage, herd nutrition, herd health management and general ranch management.


58% reported plans to adopt one or more recommended management practices

6,538 adopted recommended livestock production practices statewide.

3,398 adopted recommended forage management practices statewide.

The South Florida Beef Forage Program coordinates UF/IFAS research and Extension activities to help livestock producers enhance their forage and cattle production.

sfbfp.ifas.ufl.edu

 Search South Florida Beef Forage Program

CATTLE MANAGEMENT for Women

Designed to meet the needs of women who are taking more of a role in the decision making and management of cattle ranches, both large and small. The 2023 attendees assist in the management of

10,832 acres and **2,194** head of cattle.

64% of participants said they would use new practices such as better weed control, calf care, herbicide spraying and timing of application, proper record keeping, soil sampling, proper fertilization to reduce runoff, and investment in the ranch to increase profitability.

Through these behavior changes, the participants expect to see their profits increase by an average of **5%**.

RANCHING FOUNDATIONS

A program designed for new and aspiring cattle owners to learn about beef cattle best management practices.

70% of the **33** participants (1023 head, 2310 acres) plan to implement at least one practice presented.

WINTER Supplementation

Providing knowledge and tools to economically and efficiently manage nutritional requirements of the cow herd.

74% of participants plan to change an existing practice or begin a new one such as supplementing based on nutritional requirements and economic priority, timing and duration of supplementation, timing of fertilization, and analyzing forages.

FORAGE Management

By implementing recommended practices, participating producers estimate they can improve the profitability of their operations.

49% plan to adopt or change to practices that more efficiently utilize resources and will positively affect forage quality and yield thus improving nutrient availability to the cow-herd.

Attendees in 2023 have **5,628** head on **27,939** acres.

HERD HEALTH Management

Many animal health problems can be controlled with good management, proper nutrition, and vaccination against infectious diseases. Preventing diseases with a herd health management plan saves time, money, and reduces inputs.

\$22,311 potential revenue increase on South Florida ranches as a result of implementing recommended herd health practices.